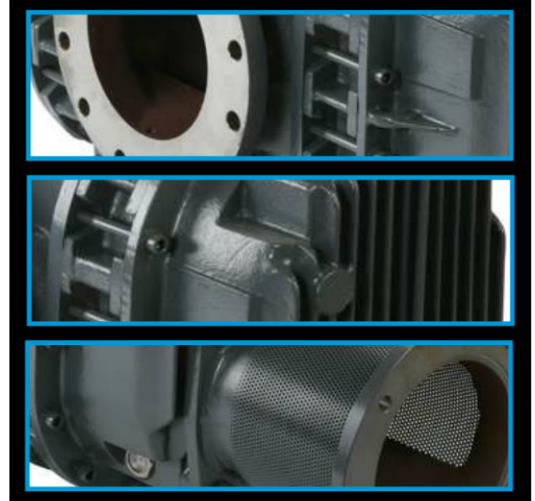


HV8000 MECHANICAL BOOSTER PUMP

MAXIMISE YOUR PRODUCTIVITY AND PERFORMANCE



The Edwards HV8000 high vacuum mechanical booster has been developed to provide high reliability operation in aggressive environments. With a nominal pumping speed of $7200 \text{ m}^3\text{h}^{-1}$ ($4241 \text{ ft}^3 \text{ min}^{-1}$) at 50 Hz, it is ideal for large industrial and chemical applications. IE3 energy efficiency 3 phase motors are now fitted to our standard motor pumps



Features and Benefits

Performance

- Stable process for consistent output – suitable for continuous operation over wide pressure ranges on heavy duty large scale applications.

Reliability

- No unplanned downtime – high performance water cooled mechanical shaft seal, large diameter shaft and large helical gears.

Adaptability

- Easy integration and safe – optional water cooled exhaust gas after cooler, shaft seal safety purge, temperature monitoring and VFD available.

Flexibility

- Configured to your needs – can be supplied with standard motor or without motor to allow a local motor to be fitted. Horizontal or vertical flow to suit application and system design.

Applications

- Steel degassing.
- Metallurgy.
- Coating.
- Process engineering industries.

Pump Range

- HV**
- HV8000

Performance Curves

HV8000 Mechanical booster pump

HV8000

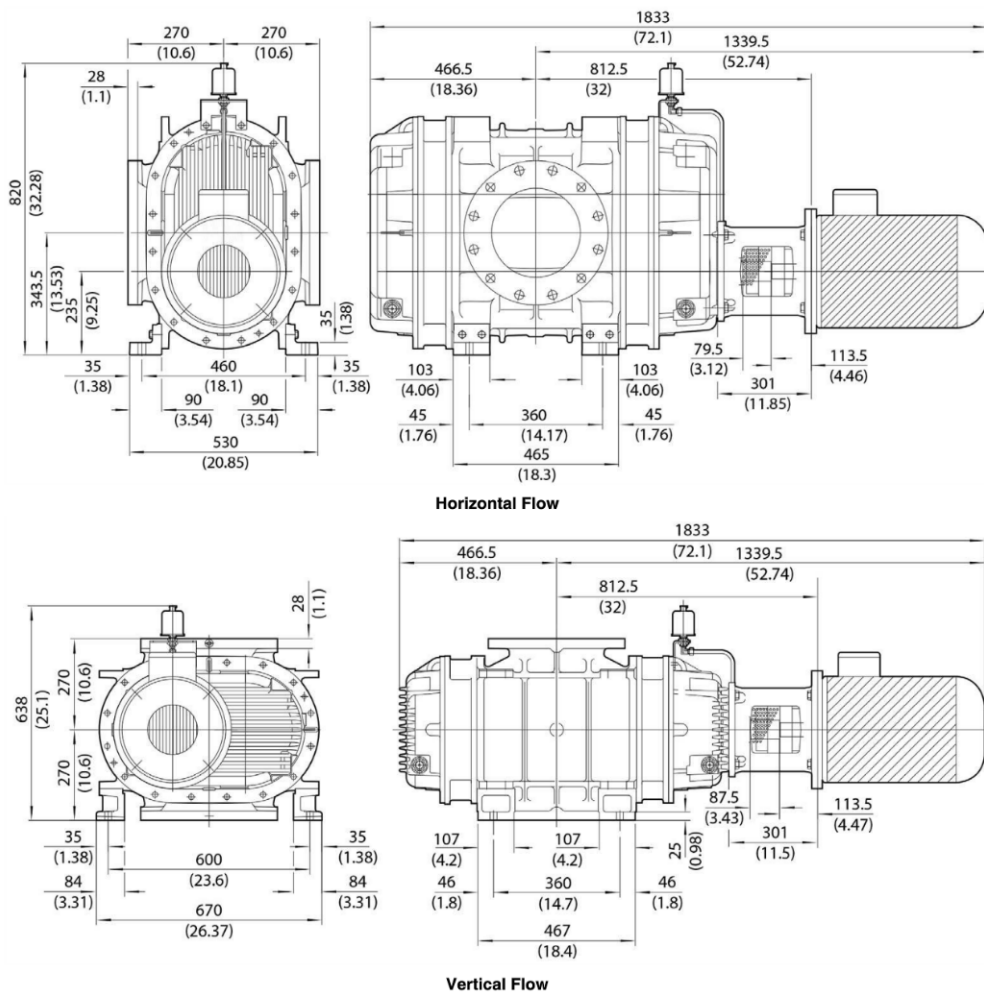


Ordering information

Product description	Order no:
HV8000 VF IE3 Asia 50/60 Hz 200 V 50/60 Hz 380 V 60 Hz	A31103934
HV8000 VF IE3 EU/USA 50/60 Hz 18.5 kW 380-400 V 50 Hz 230/460 V 60 Hz	A31103940
HV8000 VF IE3 Asia 50/60 Hz 380 V 60 Hz	A31104934
HV8000 VF IE3 EU/USA 50/60 Hz 18.5 kW 380-400 V 50 Hz	A31104940
HV8000IND VF bare shaft	A31101985
HV8000IND HF bare shaft	A31102985

Dimensions

HV8000 dimensions



HV8000 pumps tend to be used in large pumping systems rather than simple combinations.

Technical Data



	Units	HV8000
Displacement (swept volume)		
50 Hz	m ³ h ⁻¹ /ft ³ min ⁻¹	7200/4241
60 Hz	m ³ h ⁻¹ /ft ³ min ⁻¹	8640/5089
Max rotation speed		
50 Hz	rpm	3000
60 Hz	rpm	3600
Max pressure differential		
50 Hz	mbar/Torr	190/143
60 Hz	mbar/Torr	120/90
Ultimate (depends on backing set)		
50 Hz	mbar/Torr	1.5 x 10 ⁻⁴ /1 x 10 ⁻⁴
60 Hz	mbar/Torr	2 x 10 ⁻⁴ /1.5 x 10 ⁻⁴
Standard motor power	kW/hp	18.5/25
Standard backing set speed requirements	m ³ h ⁻¹ /ft ³ min ⁻¹	2600/1530
Recommended oil		Mobil SHC 629
Max oil capacity (vertical gas flow config)	litre/US gal	8.3/2.18
Inlet/outlet connection		10" class 150 ASME B16.5
Inlet/outlet cooling water connection		Rp ½ ISO 7-1 (½ BSP)
End cover purge gas inlet		Rp ¾ ISO 7-1 (¾ BSP)
Max cooling water supply pressure	bar/psi	4/58
Max cooling water supply temp	°C/F	35/95
Cooling water flow rate	lmin ⁻¹ /US gal min ⁻¹	15/3.96
Noise level		82 dB(A)
Weight (without motor)	kg/lb	570/1257
Weight (with standard motor)	kg/lb	670/1474